



## Access Policy

Usage charges & pricing presented is approved up to & including the 30th of June, 2010. (Usage charges/pricing is subject to annual review & approval by the Governing Board).

### NIF Website

For further information on the National Imaging Facility please visit [www.anif.org.au](http://www.anif.org.au)

### Access

Access to imaging facilities via the NIF is inclusive of access to equipment, technology and expertise; the latter will include project design, animal handling, image acquisition and data analysis and interpretation.

### Access Criteria

Access is merit-based to ensure optimal utilisation of resources. Criteria for determining merit include:

- The attainment of scientific excellence (niche opportunity resulting in world leadership).
- Technical feasibility of the research.
- Capability and track record of the research team.
- Availability of resources (including funding grants).
- The potential for collaboration between institutions.
- The alignment of the project with the national research priorities.
- The industrial and social impact of the project for the wider Australian community.

Priority will be given to projects funded under competitive granting schemes, on the basis that this can be assumed to be meritorious research, in the national interest, having been already assessed by peer-review. Up to 10% of time will be made available to early career researchers to enable them to acquire the expertise to develop an imaging component in their research. A further minimum 10% will be reserved for Australian academics wishing to perform proof-of-concept pilot studies, with a view to applying for competitive grants. After all other research remaining time will be available for commercially driven research.

### Access Arrangements

Access arrangements will be guided by the following principles:

- All users will be treated the same regardless of their host organisation.
- Where access costs are charged, these will be marginal costs only for publicly funded researchers of scientific merit.
- Prioritisation of access by users will follow standard consideration regarding merit of research, urgency or deadline issues etc.
- Intellectual property (IP) will belong to users except where other arrangements have been made.

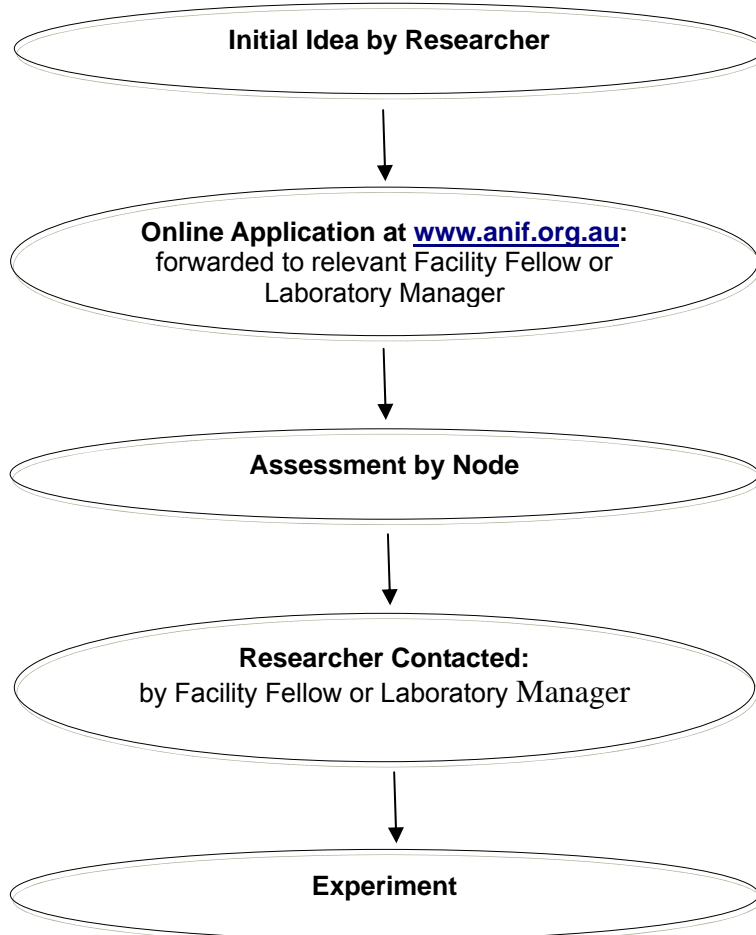
### How to Apply for Access

To apply for access for the equipment and facilities available through NIF visit [www.anif.org.au](http://www.anif.org.au), click on 'Access Application' and fill in the details required (as shown below).

- Describe the project you will be working on. What are your aims and objectives?
- What do you require (e.g. advice on techniques; use of equipment; training on equipment; other)?
- Will you require the use of facilities to acquire data and require collaborative support from staff?
- Estimated time required. Please include number of samples (animals), number of time points per sample and acquisition time per time point (if possible):
- Normally raw data will be provided in standard formats (DICOM, ANALYSE etc), do you need help with image analysis?
- If help is required please describe (e.g. DTI calculations, Kinetic modelling). This will raise the project to status of collaborative project.

## Application Process

Once submitted online the application will be forwarded to the relevant Facility Fellow or Laboratory Manager initial applications will be assessed by the Node and a decision made as to the merit of research and availability of resources (refer to *Access Criteria*). Once a decision is reached the Researcher will be contacted directly by the Facility Fellow or Laboratory Manager.



## Facilities & Instrumentation: Access Pricing

### University of Queensland Node

#### St Lucia

Instrument	Publicly Funded Users (per session*)	Commercial Users (cost per hour)	Overseas Users (cost per hour)
16.4T MRI Small Animal	\$ 150	\$ 500	Collaborative research only
4.6T MRI Small - Med Animal	\$ 150	\$ 500	Collaborative research only
2T MRI Whole Body	\$ 400	\$ 1000	Collaborative research only

\*A typical session is an hour

NIF access fees are GST exclusive



# Access Policy

Usage charges & pricing presented is approved up to & including the 30th of June, 2010. (Usage charges/pricing is subject to annual review & approval by the Governing Board).

## Wesley Hospital

Instrument	Publicly Funded Users (per session*)	Commercial Users (cost per hour)	Overseas Users (cost per hour)
4T MRI Whole Body	\$ 600	\$ 1500	Collaborative research only

\*A typical session is an hour

NIF access fees are GST exclusive

## University of New South Wales Node

### Prince of Wales Medical Research Institute

Instrument	Publicly Funded Users (per session*)	Commercial Users (cost per hour)	Overseas Users (cost per hour)
3T MRI Whole Body	\$ 600	\$ 750	\$ 750

\*A typical session is an hour

NIF access fees are GST exclusive

## University of New South Wales

Instrument	Publicly Funded Users (per session*)	Commercial Users (cost per hour)	Overseas Users (cost per hour)
IVIS Lumina Live Imaging	\$ 50	\$ 200	\$ 200
Faxitron X-Ray	\$ 25	\$ 70	\$ 70
Vevo 770 Ultrasound Microimaging	\$ 50	\$ 250	\$ 250
Skyscan1072 Micro CT	\$ 30	\$ 270	\$ 270

\*A typical session is an hour

NIF access fees are GST exclusive

## University of Western Sydney Node

Instrument	Publicly Funded Users (per session*)	Commercial Users (cost per hour)	Overseas Users (cost per hour)
11.7T MRI	\$ 150	\$ 500	\$ 500
Hawkesbury Animal MRI	\$ 150	\$ 500	\$ 500

\*A typical session is an hour

NIF access fees are GST exclusive

## Florey Neuroscience Institutes Node

### University of Melbourne – Howard Florey Institute

Instrument	Publicly Funded Users (per session*)	Commercial Users (cost per hour)	Overseas Users (cost per hour)
4.7T MR	\$ 230 <sup>Δ</sup>	\$ 340 <sup>Δ</sup>	\$340 <sup>Δ</sup>

\*A typical session is an hour

NIF access fees are GST exclusive

<sup>Δ</sup>12.5% increase will occur January 1<sup>st</sup>, 2010



# Access Policy

Usage charges & pricing presented is approved up to & including the 30th of June, 2010. (Usage charges/pricing is subject to annual review & approval by the Governing Board).

## University of Sydney Node

### Brain & Mind Research Institute

Instrument	Publicly Funded Users (per session*)	Commercial Users (cost per hour)	Overseas Users (cost per hour)
MicroPET	\$ 500 plus tracer consumables	\$ 2500	Collaborative research only
MicroSPECT	\$ 500	\$ 2500	Collaborative research only
Beta Microprobe set-up	\$ 500	\$ 2500	Collaborative research only
Integrated Laboratory fully supported access: Pharmacology/Bio-distribution (PC2) Radiochemistry Lab (PC2) Medicinal Chemistry Lab (PC2) Animal Imaging suite Separate animal rooms for rats & mice (PC2)	Only available after commissioning of the Cyclotron	Only available after commissioning of the Cyclotron	Collaborative research only
NIF Radiochemistry Hot Cell: Unsupported use of facilities, user requires radiochemistry expertise	Only available after commissioning of the Cyclotron	Only available after commissioning of the Cyclotron	Collaborative research only
Biomodelling lab	\$ 100	\$ 1000	Collaborative research only

\*A typical session is an hour

NIF access fees are GST exclusive

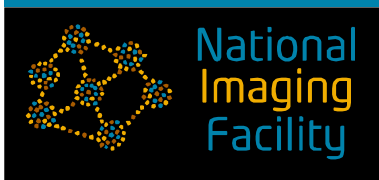
## Large Animal Research & Imaging Facility

### Institute of Medical & Veterinary Science

Instrument	Publicly Funded Users (per session*)	Commercial Users (cost per hour)	Overseas Users (cost per hour)
1.5T Whole Body MR	\$ 400	\$ 1000	\$ 1500
Hologic Dual X-ray Absorptiometer	\$ 50	\$ 100	\$ 150
Angiography suite/ Image Intensifier	\$ 125	\$ 250	\$ 375

\*A typical session is an hour

NIF access fees are GST exclusive



# Access Policy

Usage charges & pricing presented is approved up to & including the 30th of June, 2010. (Usage charges/pricing is subject to annual review & approval by the Governing Board).

## Flagship Instruments

Instrument	Node	Expected Acquisition
Research Cyclotron	USYD	2010
PET/MRI	UQ	2010

## NIF is funded by the Host Institutions & the following Funding Bodies



### NIF Founding Nodes



Large Animal Research & Imaging Facility